



**Electrolux**  
PROFESSIONAL

## Modular Cooking Range Line 700XP Open Base Cupboard 1/2 Module

ITEM # \_\_\_\_\_

MODEL # \_\_\_\_\_

NAME # \_\_\_\_\_

SIS # \_\_\_\_\_

AIA # \_\_\_\_\_

### Main Features

- Unit can be easily installed below other 700 line top models.
- Unit delivered with 50 mm height adjustable feet in Stainless steel.
- Open base compartment for storage of pots, pans, sheet pans, etc.
- Doors with handles, drawers, heating kits and runners for GN containers can be ordered separately.

### Construction

- Constructed in Stainless steel with Scotch Brite finish to meet the highest hygiene standards.

### Optional Accessories

- Kit 4 wheels - 2 swivelling with PNC 206135 ☐  
brake - it is mandatory to  
install Base support and  
wheels
- Flanged feet kit PNC 206136 ☐
- Frontal kicking strip for PNC 206147 ☐  
concrete installation, 400mm
- Frontal kicking strip for PNC 206148 ☐  
concrete installation, 800mm
- Frontal kicking strip for PNC 206150 ☐  
concrete installation, 1000mm
- Frontal kicking strip for PNC 206151 ☐  
concrete installation, 1200mm
- Frontal kicking strip for PNC 206152 ☐  
concrete installation, 1600mm
- Frontal kicking strip, 400mm PNC 206175 ☐  
(not for refr-freezer base)
- Frontal kicking strip, 800mm PNC 206176 ☐  
(not for refr-freezer base)
- Frontal kicking strip, 1000mm PNC 206177 ☐  
(not for refr-freezer base)
- Frontal kicking strip, 1200mm PNC 206178 ☐  
(not for refr-freezer base)
- Frontal kicking strip, 1600mm PNC 206179 ☐  
(not for refr-freezer base)
- Full module overshell PNC 206184 ☐
- Kit 4 feet for concrete PNC 206210 ☐  
installation (not for 900 line  
free standing grill)
- 2 panels for service duct for PNC 206248 ☐  
single "top on base"  
installation
- Pair of side kicking strips PNC 206249 ☐
- 2 supports with runners for PNC 206257 ☐  
open base for 4 GN1/1
- Electric heating kit for PNC 206259 ☐  
cupboards

371112 (E7BAND0000)

Open base, 1/2 module

### Short Form Specification

#### Item No. \_\_\_\_\_

Open base to store pots, pans, sheet pans etc. To be installed below 700XP top units in island type installations with operations from one side. Constructed in stainless steel with Scotch Brite finish. Delivered with 50 mm height adjustable feet.

APPROVAL: \_\_\_\_\_



Experience the Excellence  
[www.electroluxprofessional.com](http://www.electroluxprofessional.com)

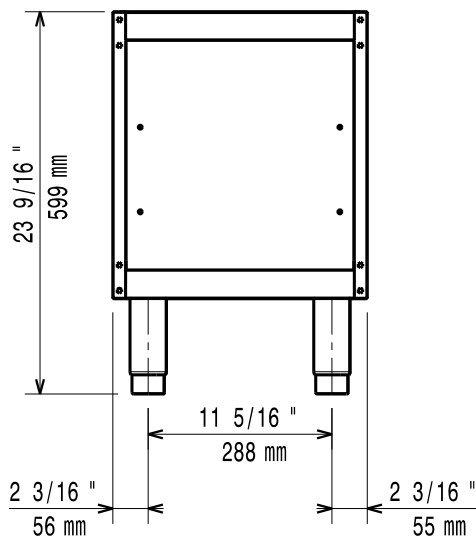
- Pair of side kicking strips for concrete installation PNC 206265 ☐
- 2 drawers for open base cupboards, 100mm height PNC 206318 ☐
- Door for open base cupboard PNC 206350 ☐
- Base support for feet or wheels - 400mm (700/900) PNC 206366 ☐
- Base support for feet or wheels - 800mm (700/900) PNC 206367 ☐
- Base support for feet or wheels - 1200mm (700/900) PNC 206368 ☐
- Base support for feet or wheels - 1600mm (700/900) PNC 206369 ☐
- Base support for feet or wheels - 2000mm (700/900) PNC 206370 ☐
- Rear paneling - 600mm (700/900XP) PNC 206373 ☐
- Rear paneling - 800mm (700/900) PNC 206374 ☐
- Rear paneling - 1000mm (700/900) PNC 206375 ☐
- Rear paneling - 1200mm (700/900) PNC 206376 ☐
- Base support for feet or wheels - 600mm (700/900) PNC 206431 ☐



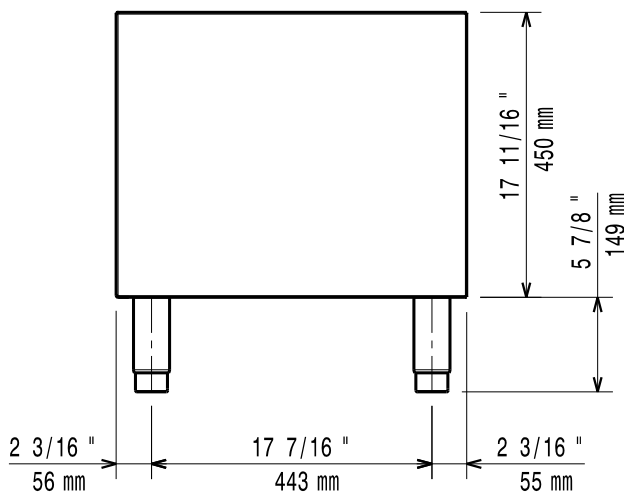
**Electrolux**  
PROFESSIONAL

## Modular Cooking Range Line 700XP Open Base Cupboard 1/2 Module

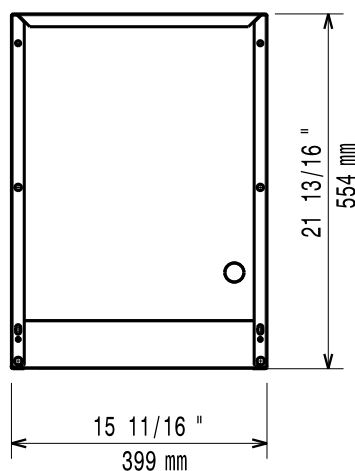
Front



Side



Top



### Key Information:

External dimensions, Width:	
371112 (E7BAND0000)	400 mm
External dimensions, Depth:	550 mm
External dimensions, Height:	600 mm
Net weight:	10 kg



Modular Cooking Range Line  
700XP Open Base Cupboard 1/2 Module

The company reserves the right to make modifications to the products without prior notice. All information correct at time of printing.

2025.12.05